



# apan62

AUCKLAND NEW ZEALAND  
10-14 AUGUST 2026

SPONSORSHIP  
OPPORTUNITIES

[www.apan62.apan.net](http://www.apan62.apan.net)

REANVZ



**10-14 August 2026**  
**Grand Millennium**  
**Auckland | New Zealand**



# Welcome

We are thrilled to invite you to Aotearoa New Zealand for the 62nd meeting of the Asia Pacific Advanced Network (APAN62), taking place from 10-14 August 2026 in Tāmaki Makaurau / Auckland.

We look forward to sharing our world-famous manaakitanga / care and hospitality with all our delegates as we come together for five days of innovation, collaboration and connection.

APAN62 will bring together a global community of researchers, educators, innovators, and technical experts to explore emerging trends in advanced networking, digital infrastructure, and collaborative technologies.

With a diverse program including keynote speakers, technical sessions, interactive workshops, and community forums, the conference promises rich opportunities for knowledge sharing, meaningful discussion and making new connections.

Then take advantage of all that Tāmaki Makaurau / Auckland has to offer: a multi-cultural urban oasis of food, music, arts and culture, where sparkling waters and lush landscapes meet city sophistication.

We cannot wait to welcome you! Nau mai, haere mai!

*Amber McEwen*

Chief Executive. REANNZ



# An opportunity

Sponsorship and attendance at APAN62 provides a unique opportunity for you to get in front of delegates from among Asia Pacific's fastest growing and largest economies.

APAN62 will attract over 300 tech-savvy delegates including: network specialists, security experts, leading academics and researchers, CIOs, CEOs, government officials, and other influencers and decision makers.

Our event venue, the Grand Millenium Auckland, is within walking distance of two universities (University of Auckland and AUT), and close to research institutes, enabling you to pursue further business and networking opportunities.

This event represents an excellent opportunity to raise the profile of your brand, increase awareness, introduce a product or service, create new connections or strengthen existing relationships.



# About APAN



APAN is the international partnership of the National Research and Education Networks across the region. It spans over half the world's population, and its members are fundamental in the provision of high-speed network connectivity, domestically and globally.

It's 20-strong members include Australia, China, India, Indonesia, Hong Kong, Korea, Japan, Malaysia, Pakistan, Philippines, Singapore and Vietnam.

APAN connects people, cultures, research and education – both nationally, regionally and internationally. Individually, members deliver the backbone network that connects the research and education networks within their country, to each other, and to over 120 other research networks around the world.

The APAN committee coordinates activities related to network technologies, services, and applications among its members and with its peer international organisations. It is also a key driver in promoting and facilitating network-enabled research and education activities. These include research collaboration, knowledge discovery and sharing, tele-health and natural disaster mitigation.

The community comes together every six months.

CEOs attend APAN for the in-person governance meetings and CEO specific sessions. Technical experts with specialist knowledge ranging from tele health, agriculture, HPC, networking and more attend to participate in working groups and to network. Early career professionals join this event to upskill and learn from the community.

Everyone who attends APAN does so to connect, engage and learn from their peers. APAN62 will be hosted by REANNZ for the first time since 2018.

## Hosts

### Research and Advanced Network New Zealand

We enable Aotearoa's research, innovation and education sectors to achieve greater success in their research endeavours.

As a Crown-owned membership organisation, we provide a centralised platform for eResearch infrastructure, expertise and services.

We design, build and operate high-performance computing and data analytics infrastructure and provide researcher-focused support services. We also provide New Zealand's National Research and Education Network (NREN), a specialist high-performance digital network, that is engineered to meet the unique, complex and data-intensive needs of our members and researchers.

# General information

## Dates

Monday 10 August – Friday 14 August 2026



## Venue

The Grand Millennium Auckland is located in the city centre, close to Queen Street, Sky City and the Viaduct Harbour. It offers ample accommodation so attendees can stay on-site, maximising networking opportunities. There is an abundance of options within the hotel and nearby for you to host guests during the event.

## Tāmaki Makaurau / Auckland

Auckland is New Zealand's most populous city and is a multi-cultural hub of food, music, arts, and culture. Also known as Tāmaki Makaurau, Auckland sprawls over volcanic hills and around twin harbours, offering an exhilarating mix of natural wonders and urban adventures.

Auckland offers an urban environment where most people live within half an hour of beautiful beaches, hiking trails and a dozen enchanting holiday islands. Add a sunny climate, a background rhythm of Polynesian culture and a passion for outstanding food, wine, and shopping, and you're beginning to get the picture of Auckland, New Zealand, our largest and most diverse city.

## REANNZ Contacts

Amber McEwen – Chief Executive      [amber.mcewen@reannz.co.nz](mailto:amber.mcewen@reannz.co.nz)  
John Graham – Business Development      [john.graham@reannz.co.nz](mailto:john.graham@reannz.co.nz)

## Help

If you have any questions or queries regarding this prospectus, please contact our conference organiser.

**Mandy Train | Project Manager**  
Conference Innovators  
T: + 64 274 952 718  
E: [mandy@conference.nz](mailto:mandy@conference.nz)

Keep up to date with all the conference news, visit our website  
[www.apan62.apan.net](http://www.apan62.apan.net)

# Sponsorship summary

	Diamond (one only)	Platinum (one only)	Gold	Daily catering Sponsor	Silver Choice of: hydration station / tote bags / notebooks & pen / charging station (subject to availability)
NZD (exc GST)	\$50,000	\$40,000	\$25,000	\$15,000	\$10,000
Exhibition space	1 x booth	1 x booth	1 x booth	1 x booth	1 x booth
Complimentary registrations including social functions	5	4	3	2	1
Speaking slot	√	√			
Associated with	Gala dinner	Welcome function	Coffee cart and lounge	Catering for a day of your choice (first come first served)	Branded item as selected above

# Sponsorship packages

---

## Diamond sponsor

---

NZD\$50,000 + GST

---

(exclusive opportunity)

### Benefits

Acknowledgment as the Diamond sponsor during promotion and throughout the event

Five complimentary full registrations, includes day catering, attendance at all sessions and social functions

One exhibition site (see page 11 for details), option to purchase additional branding and furniture or design your own space

Opportunity for a representative to address the delegation

Name association with the conference dinner

Company logo and link on the APAN62 website

Banner or advert on the APAN62 website (sponsor to provide artwork)

Company logo included on app

Company logo featured prominently on site

Acknowledgement of sponsorship during opening and closing addresses

Opportunity to provide banner for display at the event



# Sponsorship packages



---

## Platinum sponsor

---

NZD\$40,000 + GST

(exclusive opportunity)

### Benefits

Acknowledgment as the Platinum sponsor during promotion and throughout the event

Four complimentary full registrations, includes day catering, attendance at all sessions and social functions

One exhibition site (see page 11 for details), option to purchase additional branding and furniture or design your own space

Opportunity for a representative to address the delegation

Name association with the welcome function

Company logo and link on the APAN62 website

Banner or advert on the APAN62 website (sponsor to provide artwork)

Company logo included on app

Company logo featured predominantly on site

Acknowledgement of sponsorship during opening and closing addresses

Opportunity to provide banner for display at the event

---

## Gold sponsor

---

NZD\$25,000 + GST

### Benefits

Acknowledgment as a Gold sponsor during promotion and throughout the event

Three complimentary full registrations, includes day catering, attendance at all sessions and social functions

Joint name association with the coffee cart

One exhibition site (see page 11 for details), option to purchase additional branding and furniture or design your own space

Company logo and link on the APAN62 website

Company logo included on app

Company logo featured on site

Opportunity to provide banner for display at the event

# Sponsorship packages

---

## Daily catering sponsor

---

NZD\$15,000 + GST

(exclusive opportunity for a single day)  
Includes morning tea, lunch and afternoon tea

### Benefits

Acknowledgment as the catering sponsor during promotion and throughout the event

Name association with the catering for a single day

Two complimentary full registrations, includes day catering, attendance at all sessions and social functions

One exhibition site (see page 11 for details), option to purchase additional branding and furniture or design your own space

Company logo on buffet tables

Company logo and link on the APAN62 website

Company logo included on app

Company logo featured on site

Opportunity to provide banner for display at the event

Opportunity for wait staff to wear branded aprons during services (additional cost)

---

## Silver sponsor

---

NZD\$10,000 + GST

### Benefits

Acknowledgment as a Silver sponsor during promotion and throughout the event

One complimentary full registration, includes day catering, attendance at all sessions and social functions

Name association with one of the following: hydration station, tote bag, notebooks and pen, charging station (subject to availability)

One exhibition site (see page 11 for details), option to purchase additional branding and furniture or design your own space

Company logo and link on the APAN62 website

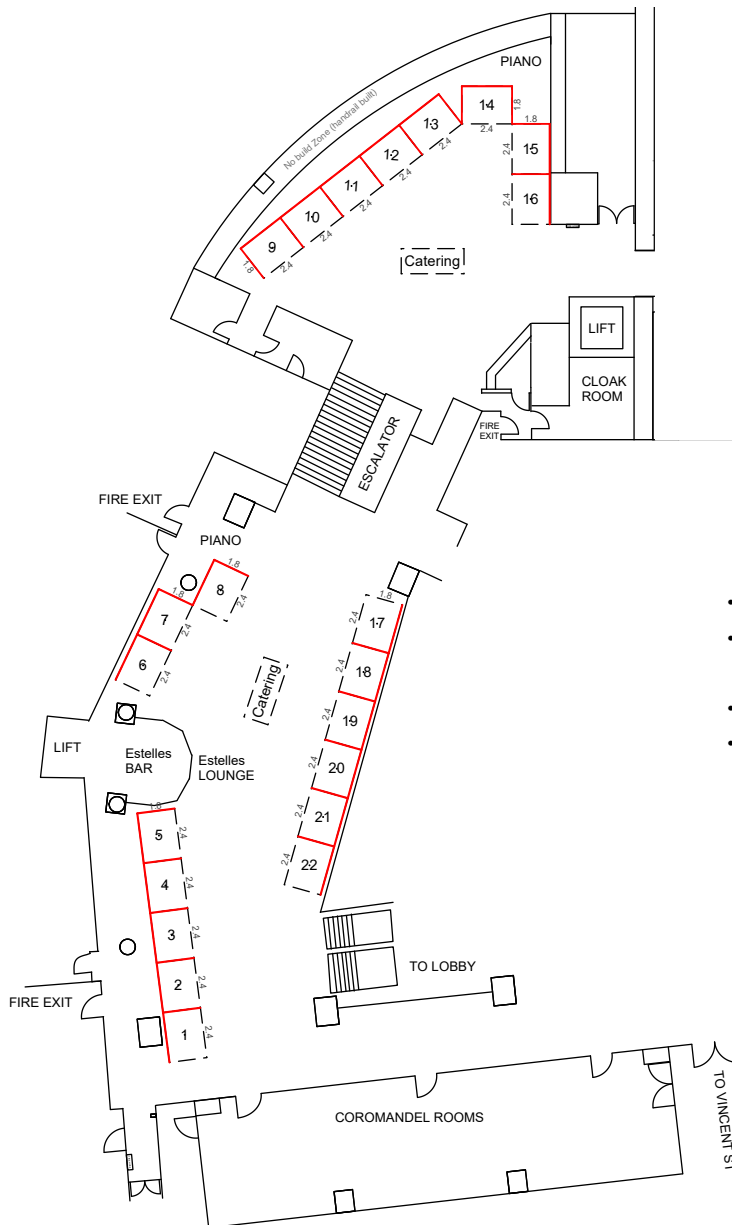
Company logo included on app

Company logo featured on site

Opportunity to provide banner for display at the event

# Floorplan

Final layout depends on number of booths required.



- Velcro sensitive panels 2.4m x 1.8m
- 1 x 10 amp power supply with multi power point
- Lighting
- Trestle table and two chairs

## Further information

If these sponsorship opportunities and benefits fall outside of your requirements, and you still wish to be associated with the APAN62 event, please contact [mandy@conference.nz](mailto:mandy@conference.nz).

# Terms and conditions

## Booking and payment conditions

All prices are in New Zealand Dollars and exclude Goods and Services Tax (GST) of 15%. Full payment is due payable on 30 days after the invoice date or prior to the conference (whichever date comes first). The conference convenor reserves the right to withdraw confirmation of any site not paid in full by the due date.

## Cancellation

Any cancellations must be made in writing to the conference organiser. In the event of cancellation of a sponsorship package or exhibition space prior to Wednesday 1 July 2026 a full refund less an administration charge of \$200 + GST will be made. Cancellations after this date will be at the discretion of APAN62 organizing committee and will be processed after the conference.

The APAN62 organizing committee reserves the right to cancel, postpone or change the venue of the exhibition in case of government imposed restrictions or circumstances beyond their control. In the case of cancellation or postponement all monies paid to date will be refunded in full less any expenses incurred. The liability of the organisers will be limited to that amount.

## Exhibition stand allocation process

Location preference within the exhibition is allocated firstly by level of sponsorship. All allocations will be made 1 April 2026, then allocated on a first-in basis irrespective of sponsorship level.

## Health and safety

APAN62 and Conference Innovators take the health and safety of our delegates, exhibitors and suppliers seriously. The exhibition manual will be provided to all exhibitors six weeks prior to the conference highlighting all the health and safety obligations. This will provide full details around compliance when packing in and throughout the conference.

## Insurance and liability

Sponsors must ensure that they are adequately covered for public liability insurance. This refers to damage or injury caused to third parties / visitors in the vicinity of their displays.

Neither APAN62, Conference Innovators, Exhibition Hire Services, Grand Millennium Auckland nor any of their staff, employees, agents or other representatives shall be held accountable for, or liable for, and the same are released from accountability, or liability for any damage, loss, harm or injury to the person or any property of the displays, however caused or any of its staff, employees, agents or other representatives.

In the event of industrial disruption and / or equipment failure due to power supply problems, APAN62, Conference Innovators, Exhibition Hire Services and Grand Millennium Auckland will not be held liable and accept no responsibility for loss of monies incurred by sponsors or damage to property.

The conference organisers accept no liability for damage to sponsors equipment by loss, damage, theft, fire, water, storms, strikes, riots, or any cause whatsoever. Sponsors and exhibitors are advised to insure against such liability.

## Custom built stands

One month prior to the conference, all exhibitors installing custom built stands must provide a detailed plan for approval by the venue and the conference organisers. Information required includes: footprint, layout, banner / light rigging and walls / solid heights.

## Registration

Some sponsorship and exhibition packages include a number of complimentary registrations. Links will be provided to the key booking contact for each organisation in due course. ALL attendees must be registered.

# Sponsorship Application Form

Organisation

Name (main contact)

Email

Mobile

Address for invoice

Purchase order number (if required)

## Sponsorship

Diamond \$50,000 + GST

Platinum \$40,000 + GST

Gold \$25,000 + GST

Catering \$15,000 + GST

Silver \$10,000 + GST

## Payment

All payments are in New Zealand dollars. GST is payable (currently 15%)  
On receipt of this form you will receive an invoice. Payment options are invoice or credit card (surcharge applies).

Complete and return this form to:  
APAN62, [mandy@conference.nz](mailto:mandy@conference.nz)  
+64 274 952 718

By completing and returning this form, you agree to our Terms and Conditions above.